

Helping under-resourced institutions increase
NIH funding success and build research capacity.

SuRE
Resource
Center

GRANTSMANSHIP

Training, Guidance & Expertise

OVERVIEW

The Challenge: Institutions that teach students from backgrounds underrepresented in science often lack the resources to build a research environment on their campuses. As a result, the ability to support faculty research and provide racially diverse and low-income students access to biomedical careers becomes challenging.

The Solution: The National Institutes of Health (NIH) designed the **SuRE program** to help qualifying institutions on their path toward building and sustaining a research infrastructure. In partnership, the **SuRE Resource Center** provides free training, guidance, and expertise to help bridge the gap in taking those initial steps.

HOW WE HELP

Webinar Training

Monthly trainings
for faculty and
Office of Sponsored
Projects staff

Bootcamp Training

Online event prior
to SuRE application
deadlines

Biennial Conference

Networking for
national SuRE
community

Consulting

Personal
instruction from
research experts

OSP Seed Grant

Competitive
funding to grow
Office of Sponsored
Projects (OSP)

On-Demand Resources

Recorded training
videos and
downloadable
content

WHO WE SUPPORT



FACULTY

Reduce the Learning Curve
in Funding Your Research



RESEARCH ADMIN

Build an Environment That
Supports Faculty Research



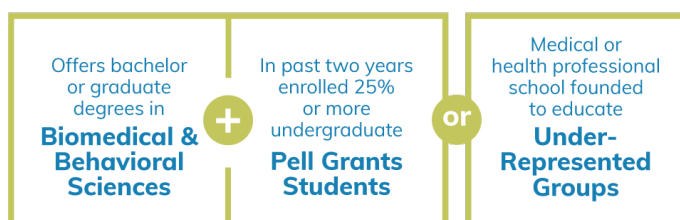
LEADERSHIP

Obtain NIH Research Grants
& Recruit Promising Students

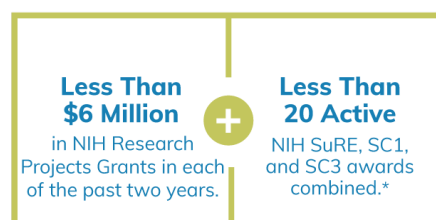
ELIGIBILITY

The **NIH SuRE program** is designed for institutions that meet specific institutional and funding criteria. These include awarding bachelor or graduate degrees in biomedical and behavioral sciences, enrolling significant numbers of students from backgrounds nationally underrepresented in biomedical research, and receiving limited NIH Research Project Grant funding. For questions about eligibility, visit our [FAQ page](#) or request a Regional Coordinator below.

1. Institutional Criteria



2. Funding Criteria



* Does not apply to SuRE-First

R16 FUNDING MECHANISMS

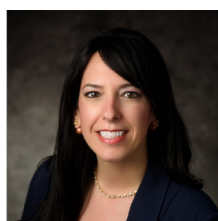


SuRE is for tenure-track (or equivalent) faculty with prior research experience not currently funded by an NIH RPG grant, with the exception of SCORE or SuRE grants. Those eligible for SuRE-First who do not want to commit six calendar months of effort may also apply.

SuRE-First is for tenure-track (or equivalent) faculty without experience leading externally-funded, independent research.

REGIONAL COORDINATORS

Whether you're new to SuRE or familiar with the program and looking for advice, please feel free to contact one of our Regional Coordinators. They are here to answer your questions, provide guidance, and help you connect with the SuRE Resource Center team.



WEST

Analia Loria, PhD
University of
Kentucky



CENTRAL

Esther Dupont-
Versteegden, PhD
University of
Kentucky



EAST

Martha Peterson, PhD
University of
Kentucky



SOUTH

Brittany Rice, PhD
University of
Kentucky

[Request a Coordinator](#)

01.07.25

CONTACT US

Visit our website



859-257-5167
SURE.RC@uky.edu