

Rodent Euthanasia Guidelines and Recommendations



Division of Laboratory
Animal Resources



Euthanasia Guidelines

In their 2020 report, the *AVMA Guidelines for the Euthanasia of Animals: 2020 Edition* reviewed the current literature and concluded that “the practice of immersion, where conscious animals are placed directly into a container prefilled with 100% CO₂, is unacceptable” and mandated the gradual displacement method of 30-70% CO₂ euthanasia as the only acceptable method.

For complete information, please refer to the full text of the UK IACUC Policies Guidelines, and Procedures 103 found on the [IACUC website](#)



Euthanasia Guidelines Procedures

- ✓ Keep the animal as calm as possible
- ✓ Maintain a professional demeanor; keep your focus on the animal
- ✓ Make sure the procedure is performed correctly and accomplished humanely
- ✓ ***NEVER perform euthanasia in an animal housing room***



In All Cases, Death Must Be Ensured

- ✓ By allowing a sufficient period of time in a chamber when using inhalant gases
- ✓ By utilizing an unequivocal secondary means of ensuring death (decapitation, opening of the thoracic cavity) ***This is a required procedure when using CO₂***

What to Expect

- ✓ The animal must **lose consciousness first**
- ✓ Then motor function is lost
- ✓ Animals may continue to have random reflex motor activity after losing consciousness
- ✓ ***This is NOT evidence of pain or distress.***



Inhalant Agents

Cause death by indirect hypoxia; anesthesia first, then hypoxia

Safety issues:

- ✓ Can also be breathed by the technician!
- ✓ Use proper concentrations
- ✓ Maintain equipment properly
- ✓ Do not use CO₂ as sole method in neonates– they are very resistant to hypoxia



Carbon Dioxide (CO₂)

Is Rapid, Effective, Easy to Use, Inexpensive, and Safe

Correct concentration is important to minimize distress in the animals:

- ✓ 100% CO₂ at a flow rate of 30-70% of chamber volume per minute
- ✓ CO₂ must be supplied from either gas cylinders or building CO₂ gas distribution systems equipped with an appropriate pressure reducing regulator and flow meter combination (or equivalent) to permit precise regulation of gas flow to the chamber



How Many Mice Can I Put In The Chamber

Mice:

- ✓ Grouping animals, you should not put more than 8-12 if they are weanlings and no more than 8 adults

Weanling don't have a problem with grouping nor do most females, but any adult males regardless of the strain will become aggressive

- ✓ If you can't see the floor and the animals can't move around, you have too many in the cage

The best thing is to not combine cages unless you absolutely have to



How Many Rats Can I Put In The Chamber

Rats: No more than 4-5 depending:

- ✓ On Size
- ✓ Age
- ✓ Weight if adults

No more that 10-12 if weanlings
(less than 40 days of age)



Steps for Using Carbon Dioxide for Euthanasia

- ✓ Place animals in appropriate chamber
- ✓ Place top securely on cage
- ✓ Turn CO₂ tank on
- ✓ Introduce 100% carbon dioxide at a rate of 30-70% of the chamber volume per minute
- ✓ Adjust flow meter to appropriate setting for cage size according to chart located above tank
- ✓ Allow time for animal(s) to become unconscious and for all motion to cease

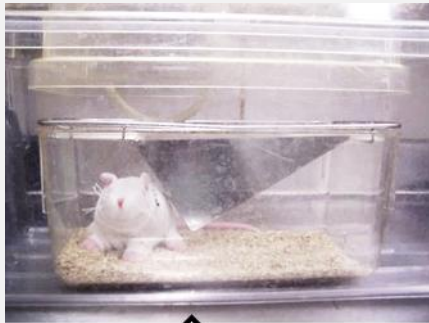
Carbon Dioxide Method

- ✓ Do Not pre-fill the chamber
- ✓ Use correct setting
- ✓ Consult wall chart for proper settings
- ✓ Remember to turn off gas at main tank when finished



Carbon Dioxide Method Cont. 1

When placing mouse cages INSIDE the large cage to euthanize, be sure to set flow meter for mice to 5-7 liters per minute. Rats 8 up to 12 liters/min



Static micro-isolator small cage 3-4 liters per min.

Small mouse IVC inside large cage 5-7 liters per min.



Large mouse IVC inside large cage 5-7 liters per min. Rats 8 up to 12 liter/min



Carbon Dioxide Method Cont. 2

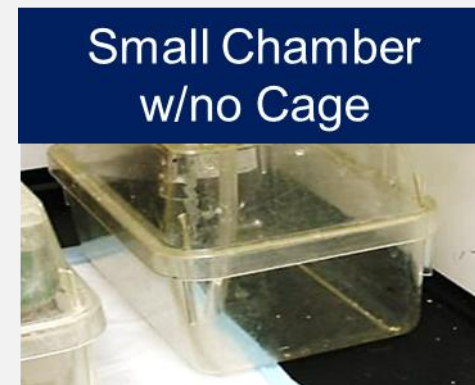
- ✓ Maintain gas flow for 1 minute after apparent death
- ✓ Turn off CO₂ tank and allow animals to remain in unopened chamber undisturbed for several minutes to ensure that death has occurred
- ✓ Ensure death by secondary method (cervical dislocation, pneumothorax, or decapitation for neonates is required)

The secondary method to ensure death is an IACUC requirement when using CO₂ is your method of euthanasia.

Flow Rates for Carbon Dioxide

It is strongly recommended that animals stay in their home cage whenever possible. It is less stressful for the animals. All sizes of mouse cages fit in the large cage. Be sure to leave the wire bar lid in place.

Cage Type	Cage Size (W x L x H)	Flow Rate per IACUC Policy 103
Small (Mouse cage)	7.5" x 11.75" x 5"	For mice 3-4 liters/min For Rats 8 up to 12 liters/min
Large (Rat cage)	10.5" x 19" x 8"	For mice 5-7 liters/min For rats regardless of cage size 8 Up to 12 liters/min



You must remain with the animal during the procedure

Required Secondary Methods of Euthanasia When Using Carbon Dioxide

- ✓ Decapitation (pups)
- ✓ Thoracotomy: open the chest to prevent breathing *
- ✓ Exsanguination (bleed out)
- ✓ Cervical dislocation

* When collecting tissue or major organs, the opening of the major body cavity and subsequent thoracotomy (disruption of the diaphragm) can serve as your secondary method.

Decapitation of Neonate Mouse Pups with Scissors

After the pups have been euthanized with Carbon Dioxide, the secondary means of euthanasia is decapitation for pups (0-10 Days Old).

Take a **SHARP** pair of scissors and cut between the ears and the point of the shoulders

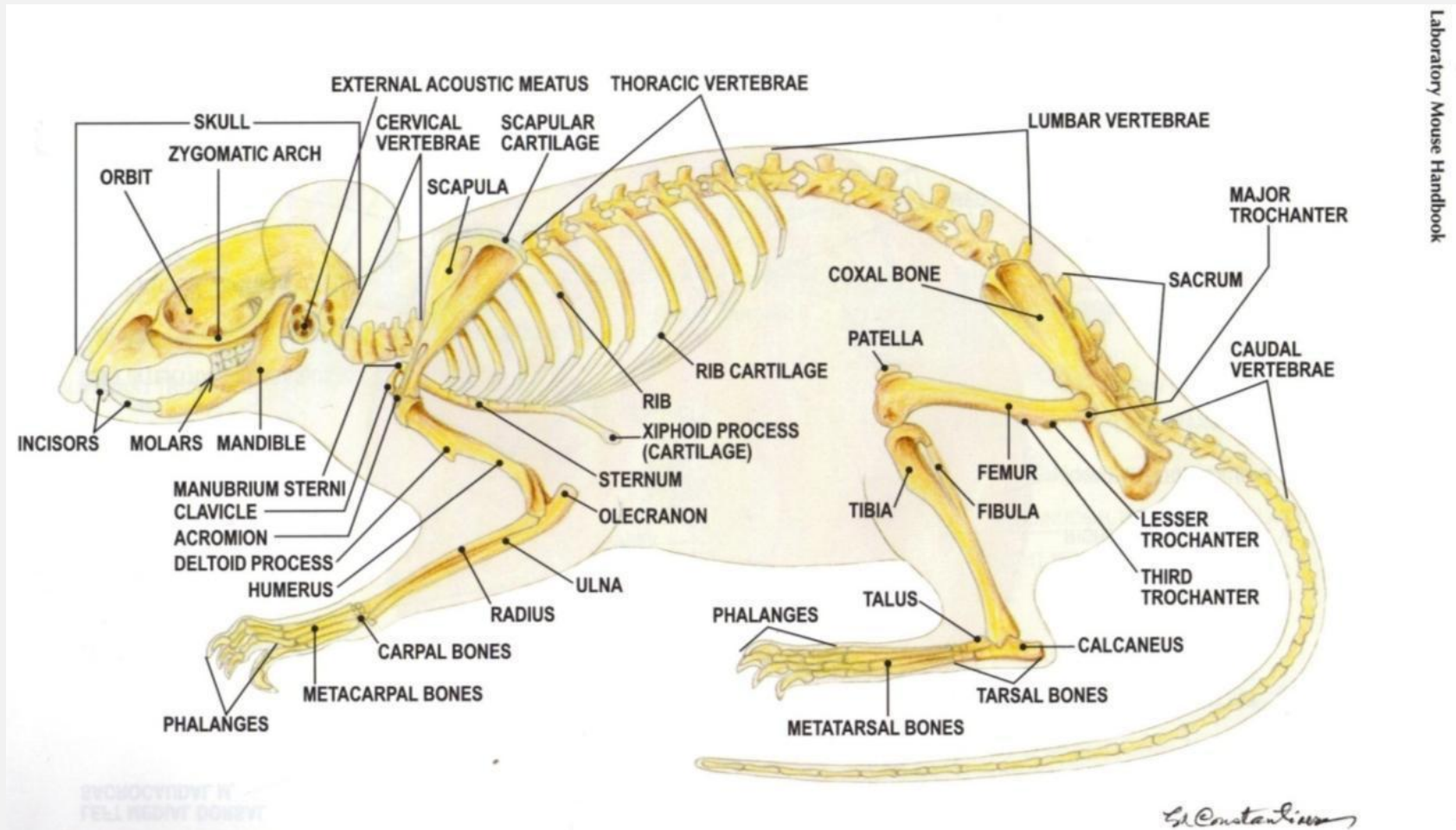


Cut Here

Cervical Dislocation in Mice and Rats as a Secondary Means of Ensuring Death

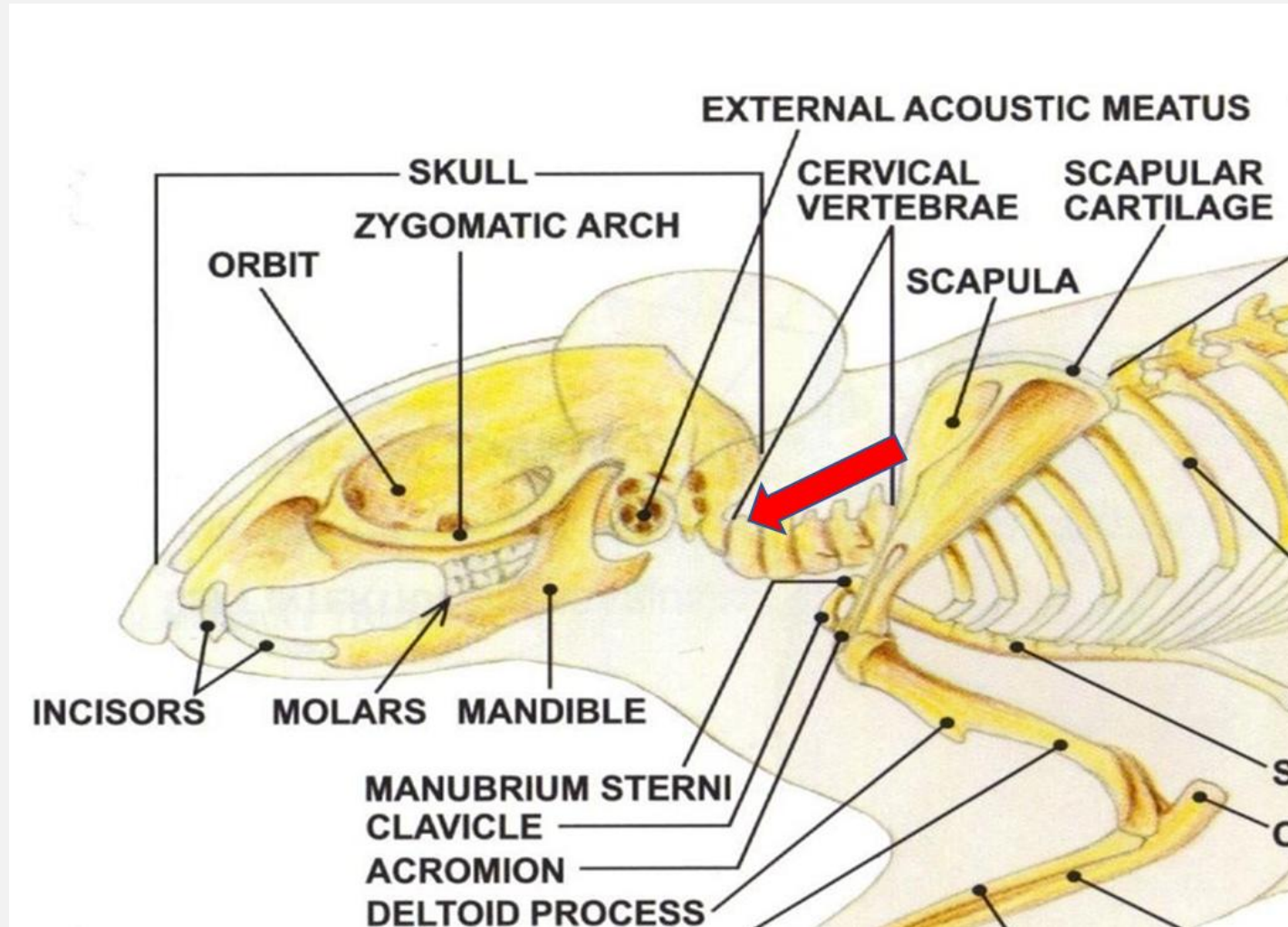


Skeletal Anatomy of the Mouse

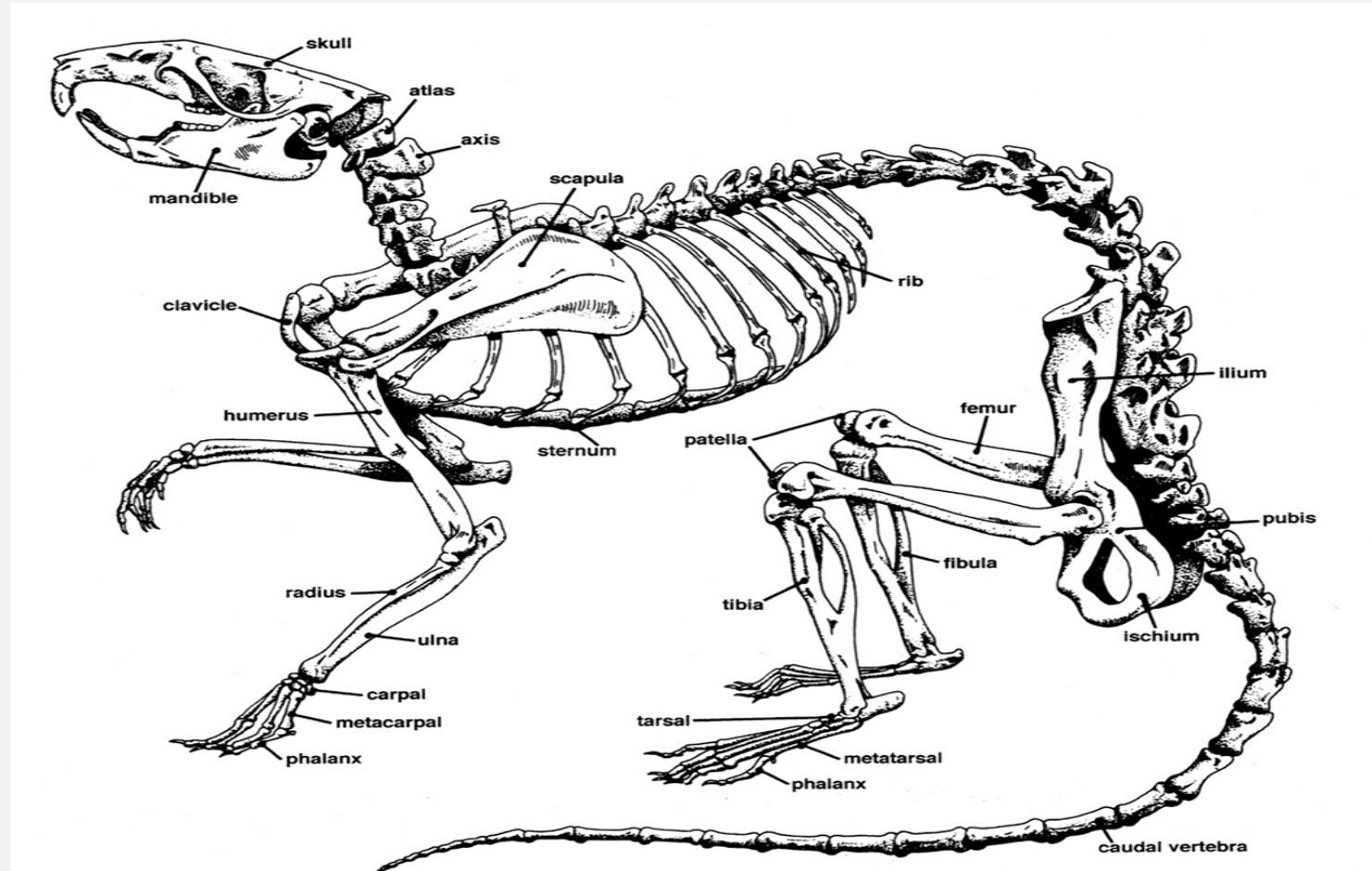


Laboratory Mouse Handbook

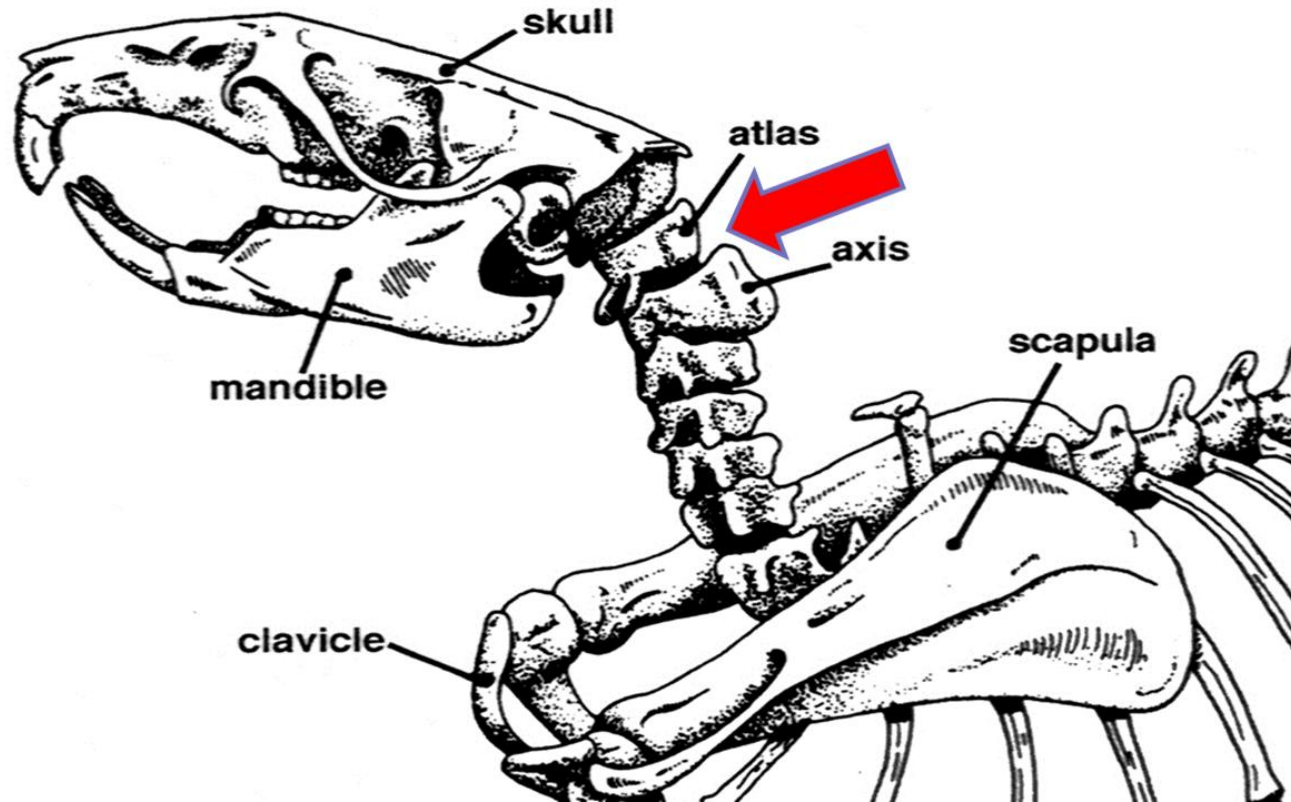
Skeletal Anatomy of the Mouse: Area of Concentration



Skeletal Anatomy of the Rat



Skeletal Anatomy of the Rat: Area of Concentration



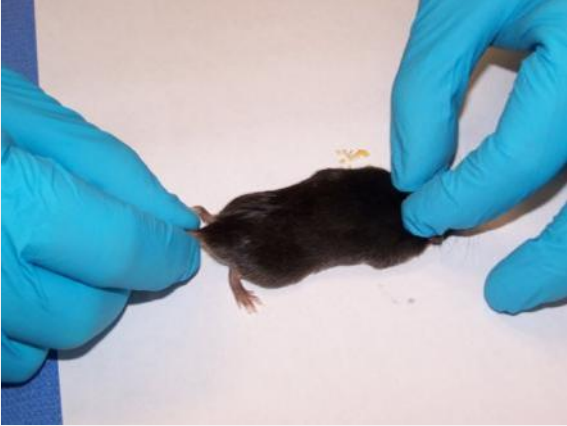
By AVMA
Guidelines cervical
dislocation should
only be performed
on rats 200 grams
and lighter

Cervical Dislocation Using an Instrument

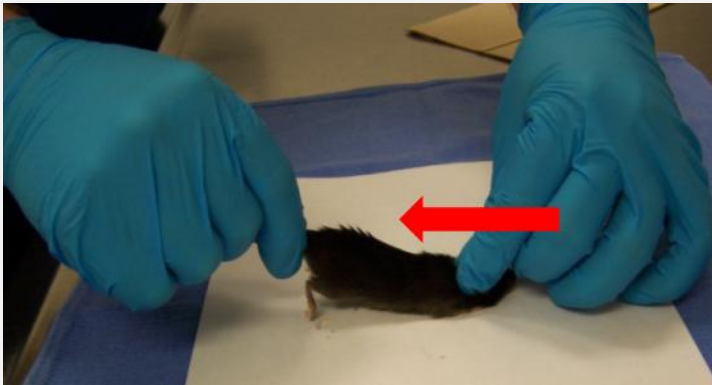
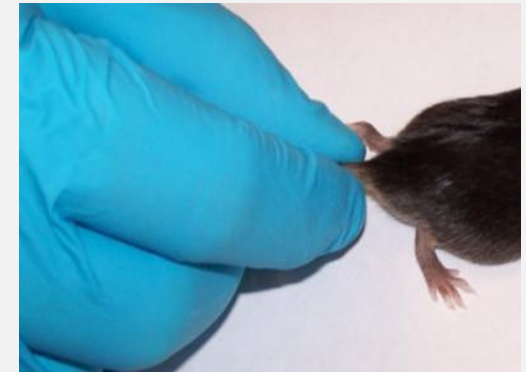


A pen, pencil or similar object may be placed directly behind the ears at the base of the skull apply slightly forward and downward pressure to assist with the disarticulation. Grasp the base of the tail, NOT the end (as it may deglove) and with the head held securely in place, with a steady pulling motion, lift the tail slightly and disarticulate the cervical vertebrae

Cervical Dislocation Without Instruments



Grasp the mouse directly behind the ears and at the base of the tail. Do not grasp tail in the middle or at the end since it may cause it to deglove.



While keeping the head stationary, with a firm steady pulling motion lift the tail slightly and disarticulate the cervical vertebrae.

Thoracotomy



With mouse or rat on its' back, grasp a small flap of skin at the end of the sternum



With sharp scissors, cut a small hole in the skin and musculature at the diaphragm

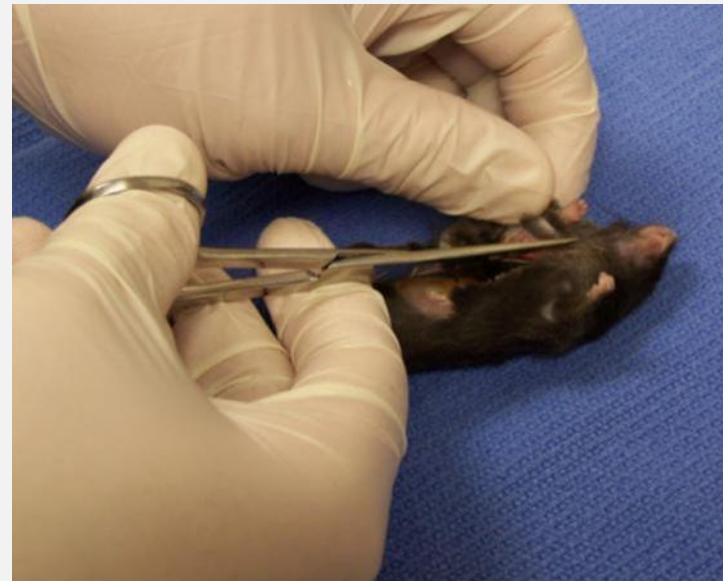


Thoracotomy Cont.



Insert one blade of scissors into the opening at the point of the sternum

Cut through the rib cage opening the thoracic cavity



Proper Handling of Rodents Post Euthanasia

IACUC requirements for proper handling of rodents after euthanasia are that **all** euthanized rodents (this includes neonates)

Must Be:

- ✓ Placed in leak proof bags
- ✓ Clearly labeled (using tape, tags, or markers) with the Principal Investigator's Name Or Protocol #, your initials, and the date

If you observe someone who is not following proper euthanasia procedures, make DLAR aware of this or contact the IACUC.

Proper Handling of Rodents Post Euthanasia Cont.



Step 1.

Properly label the body bags with PI Name or Protocol #, Date, (*time optional*), and your Initials



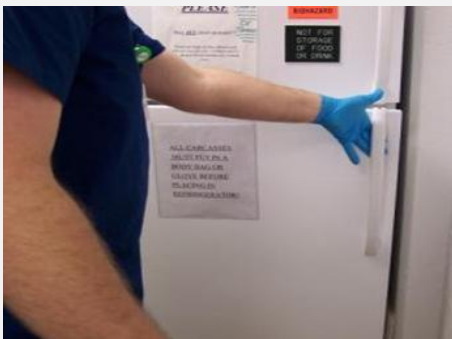
Step 2.

Place animals in bag and tie the opening



Step 3.

Place securely tied and labeled bag in refrigerator or cooler



Keep it Clean

Clean the chamber and surrounding area with disinfecting agent (MB-10 solution)

Place empty home cages/water bottles in designated area for dirty/used caging

Do not leave in procedure rooms



***Your mom doesn't work here
so clean up is up to you!***



Who to Call if You Need Assistance: Animal Care Supervisors

ANIMAL CARE SUPERVISORS		
NAME	OFFICE PHONE	PAGER
Kim Tomaschko (Animal Care Supervisor III)	859-323-2816	859-330-2112
Peggy Hankes-Peña (Animal Care Supervisor III)	859-323-6015	859-330-0981
Erin Jones (Animal Care Supervisor II)	859-257-3562	859-330-1897
Brandon McKinley (Animal Care Supervisor II)	859-562-2933	859-330-0737
Arika Zook (Animal Care Supervisor I)	859-323-5885	

Who to Call if You Need Assistance: Veterinary Services

VETERINARY SERVICE SUPPORT PERSONNEL

NAME	OFFICE PHONE	E-MAIL
Glenn Florence (Research Analyst)	859-257-1026	gflor0@email.uky.edu
Kristin Fox (Research Analyst)	859-562-0159	kristin.fox@uky.edu
Wade Washington (Surgery Tech)	859-323-6027	washing@email.uky.edu
Nikki Caudil (Vet Tech)	859-323-6010	nikki.caudill@uky.edu
Taylor Mims (Vet Tech)	859-323-3093	tbwo222@uky.edu
Bonnie Newcomb (Vet Tech)	859-257-4592	bonnie.newcomb@uky.edu
Amelia Hall (Research Facility Manager-Clinical)	859-323-1547	amelia.hall@uky.edu
Dr. Stasis Bembenek Bailey (Veterinarian)	859-562-0575	stasia.bembenekbailey@uky.edu
Dr. Jillian Condrey (Veterinarian)	859-323-0289	jillian.condrey@uky.edu
Dr. Cheryl Haughton (Veterinarian)	859-257-3548	cheryl.haughton@uky.edu
Dr. Jeanie Kincer (Director/Veterinarian)	859-323-5469	jeanie.kincer@uky.edu
Dr. Marissa Pollak (Veterinarian)	859-257-4538	pollak.m@uky.edu



DLAR Training Group

Senior Clinical Veterinarian

Cheryl Haughton, DVM,
DACLAM

859-257-3548

cheryl.haughton@uky.edu

DLAR Training Coordinator

James “Ken” Hays,
(USA Ret), BS, RLATG

352-231-2990

ken.hays@uky.edu

DLAR Trainer

Terrisha Buckley, MS

859-323-5697

tbuckley@uky.edu



Reference Sources & Acknowledgements

Assistant Laboratory Animal Technician Manual

(American Association for Laboratory Animal Science)

2020 Report of the AVMA Panel on Euthanasia

Policy Procedures and Guidelines:

IACUC-103 (Institutional Animal Care and Use Committee, University of Kentucky)

Division of Laboratory Animal Resources Veterinarians

Research Analysts DLAR (for their assistance in graphic representation)

