

# **2025-2026 Research Report to UKRF Board of Directors**

**Ilhem Messaoudi, Ph.D.**

**Professor, Microbiology, Immunology & Molecular Genetics**

**Acting Vice President for Research**

**May 12, 2026**

# University of Kentucky Research Mission

As Kentucky's flagship land-grant institution, UK drives high-impact research across 17 colleges, more than 70 centers and institutes, and a Cooperative Extension Service reaching all 120 counties to advance discovery in health, energy, agriculture, and emerging technologies that fuel economic growth statewide and beyond.

Our faculty, staff and students translate knowledge into real-world solutions securing competitive funding, strengthening industry partnerships, and addressing the most pressing challenges facing our state and nation.

# University of Kentucky Research Foundation Budget

- The UKRF budget is primarily funded by facilities and administrative (F&A) cost recovery; reimbursements from the federal and state government for the full costs UK incurs in conducting sponsored research.
- Our current negotiated F&A research rate is 54%, meaning for each \$1 that is expended on a grant or contract, the institution should receive an additional \$0.54.
- **However**, not all expenditures on grants and contracts accrue F&A and some grants are not eligible for the full rate. **Our actual rate for FY25 was approximately \$0.25/\$1 in direct costs.**

# University of Kentucky Research Highlights

**From the frontiers of space to the soil beneath our feet, UK researchers are turning bold ideas into real-world breakthroughs, improving lives, strengthening communities and positioning Kentucky as a national leader in discovery and innovation.**

**Every investment in our research enterprise fuels the next generation of solutions and every person in this room plays a part in making it possible.**

## UK RESEARCH HIGHLIGHTS

# UK helps power safe return of NASA's Artemis II

After the Artemis I test flight revealed heat-shield failures during re-entry, NASA launched a nationwide investigation. The culprit: gas buildup causing material to break away under extreme conditions.

Pigman College of Engineering faculty designed a device to measure how gases move through microscopic pores in shield material and developed advanced 3D imaging methods giving NASA the data needed to ensure crew safety for Artemis II.



## UK RESEARCH HIGHLIGHTS

# CAER completes sustainable aviation fuel study

UK's Center for Applied Energy Research (CAER), partnering with the Kentucky Energy and Environment Cabinet, completed a risk assessment of feedstocks for sustainable aviation fuel (SAF) production.

Key finding: Corn oil emerged as the lowest-risk, most viable pathway for SAF manufacturing in Kentucky.



## UK RESEARCH HIGHLIGHTS

# Enhanced Beef Systems Analyzer helps producers

UK's Beef Extension Team upgraded its Beef Systems Analyzer — an online tool that evaluates nutrition, forage, health, genetics and reproduction practices to deliver customized, research-based recommendations to producers.

Funded by the Kentucky Agricultural Development Fund, the tool strengthens farm operations statewide through targeted, data-driven guidance.



# Innovation turns distillery waste into energy storage

Every bottle of bourbon generates up to 10 barrels of waste stillage. UK researchers are converting that byproduct into high-performance supercapacitor components for energy storage.

Early results: 25x more energy stored per kilogram than conventional devices with potential to help stabilize the electrical grid.



## UK RESEARCH HIGHLIGHTS

# Data tool gives state's opioid response an edge

UK researchers built RADOR-KY, a surveillance system delivering near-real-time opioid overdose data for all 120 Kentucky counties to health departments, community organizations, and policymakers.

Launched with a \$3.1 million NIDA grant in 2023, the tool is now live at [rador-ky.uky.edu](https://rador-ky.uky.edu).



# Diabetes prevention earns \$11 million NIH award

UK researchers received a prestigious Centers of Biomedical Research Excellence (COBRE) grant. The five-year, \$11 million grant from the National Institute for General Medical Sciences (NIGMS) will fund the UK Diabetes Prevention COBRE (UK-DPC). The grant will strengthen the foundation of diabetes prevention research by expanding and modernizing diabetes-focused infrastructure across campus and the Commonwealth.



# Other High-impact Grants

- COBRE for Translational Chemical Biology, Phase II (renewal), \$11.3 million, Jon Thorson (College of Pharmacy)
- Kentucky Women's Justice Community Overdose Innovation Network, Phase II (renewal), \$7.2 million, Michelle Staton/Carrie Oser (College of Medicine)
- UnLost: Uncovering Lost Knowledge from the Ancient Library of Herculaneum: Overcoming Damage and Reviving the Human Experience Using Physical Evidence, AI, and the Structuring of Diverse Data, \$4.7 million, Brent Seales (Pigman College of Engineering)
- DOE EPSCoR Implementation: Light-Matter Interactions in Magnetic Metamaterials (renewal), \$4.3 million, Todd Hastings (Pigman College of Engineering)
- Restoration and Maintenance of Physical and Neurosensory Performance (RAMP) in Naval and Marine Corps Aviation, \$3.9 million, Joshua Winters (College of Health Sciences)
- EAP-HI: Advancing Precision Neighborhood Scale Weather Forecasting with Autonomous Aircraft Systems and Adaptive Microscale Models, \$2 million, Sean Bailey (Pigman College of Engineering)
- East Palestine Train Derailment Health Research Program, \$1.8 million, Erin Haynes (College of Public Health)

## UK RESEARCH HIGHLIGHTS

# Faculty Honors and Awards

## College of Arts and Sciences

- **Frank X Walker:** 2025 PEN/Voelcker Award for Poetry
- **Gary Ferland:** Catherine Wolfe Bruce Gold Medal, Astronomical Society of the Pacific

## Gatton College of Business and Economics

- **David Hardesty:** American Marketing Association (AMA) Lifetime Achievement Award

## College of Health Sciences

- **Phillip Gribble:** National Athletic Trainers' Association (NATA) Most Distinguished Athletic Trainer

## College of Medicine

- **Nathan Vanderford:** American Association for Cancer Education (AACE) Fellow
- **Matthew Bush:** NSF Presidential Early Career Award for Scientists and Engineers (PECASE)
- **Robert Helsley:** Walter Shaw Young Investigator Award, American Society for Biochemistry and Molecular Biology (ASBMB)

# Faculty Honors and Awards (cont.)

## College of Design

- **Kristi Bartlett:** NSF CAREER Award

## Martin-Gatton College of Agriculture, Food and Environment

- **Subba Reddy Palli:** National Academy of Inventors (NAI) Fellow
- **Christopher Shephard:** NSF CAREER Award

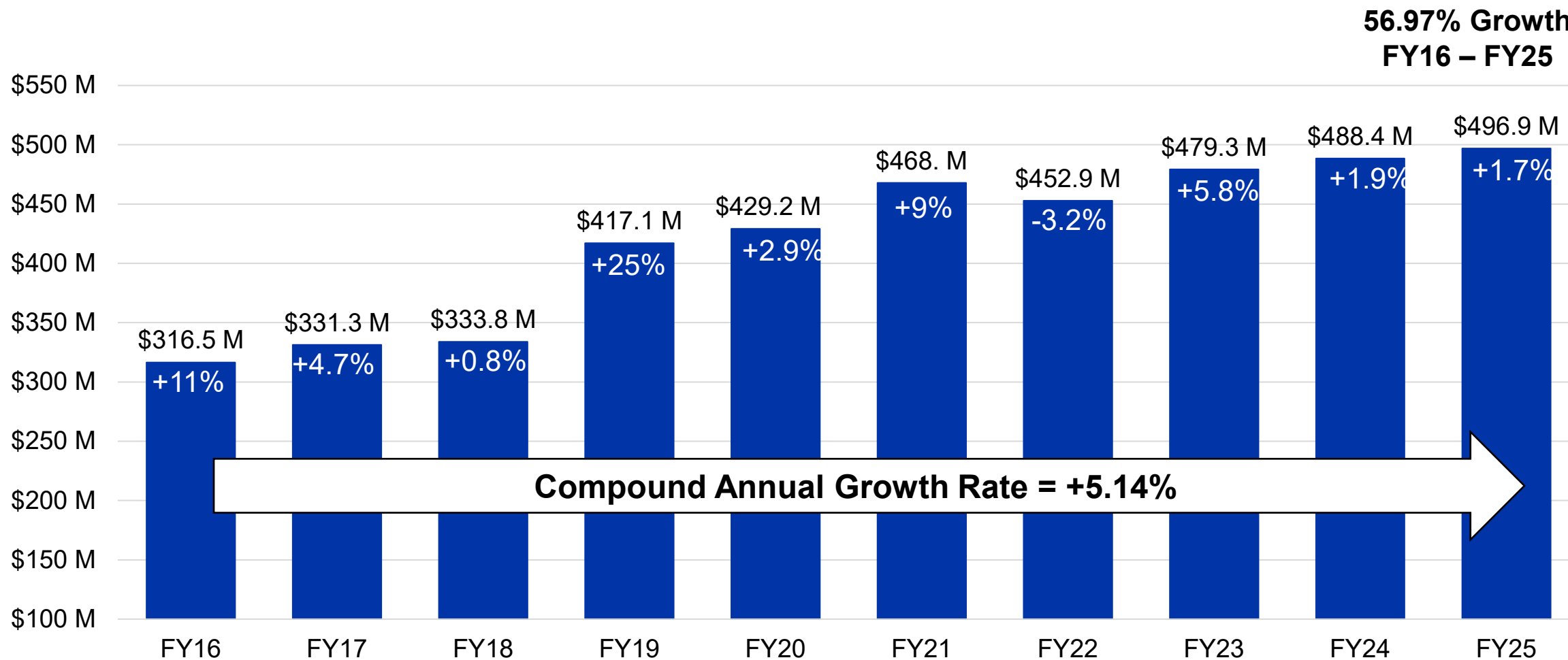
## Stanley and Karen Pigman College of Engineering

- **L. Sebastian Bryson:** American Society of Civil Engineers (ASCE) Distinguished Engineering Educator Award
- **Johne Parker:** American Society of Mechanical Engineers (ASME) Fellow
- **Alexandra Paterson:** DARPA Young Faculty Award
- **Lindell Ormsbee:** Environmental and Water Resources (EWRI) Lifetime Achievement Award
- **Alexandre Martin:** NASA Exceptional Public Service Medal
- **Diana Byrne, Alexandra Paterson, Yang Xiao, Ishan Thakkar, Biyun Xie:** NSF CAREER Award

# UK Awarded Grants and Contracts

FY25

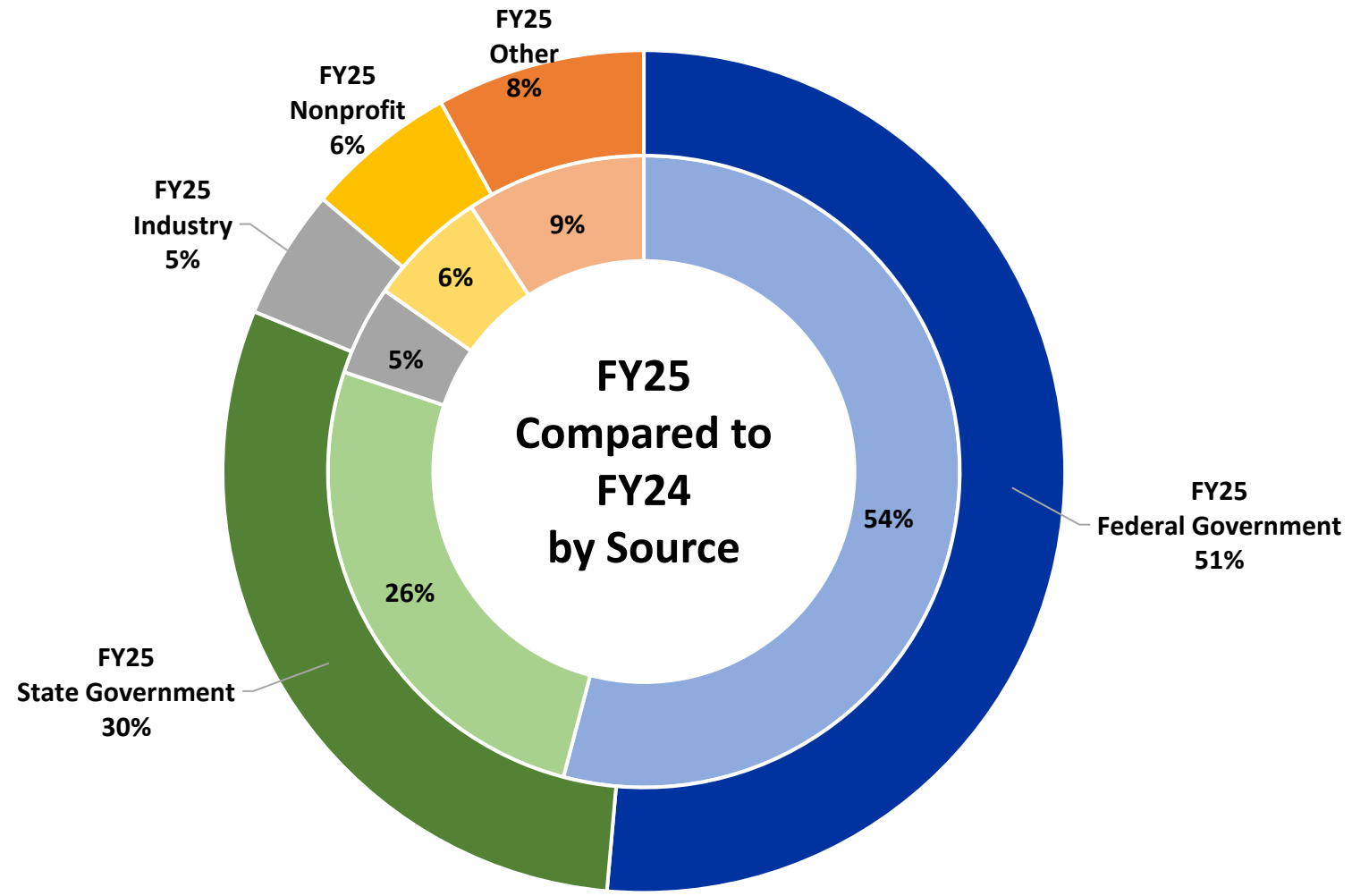
# Progressive Growth in UK External Grant and Contract Awards



Source: University of Kentucky, Office of Sponsored Projects Administration Database

# UK Grant and Contract Awards by Source

Federal funding is the largest source of support



Source: University of Kentucky, Office of Sponsored Projects Administration Database

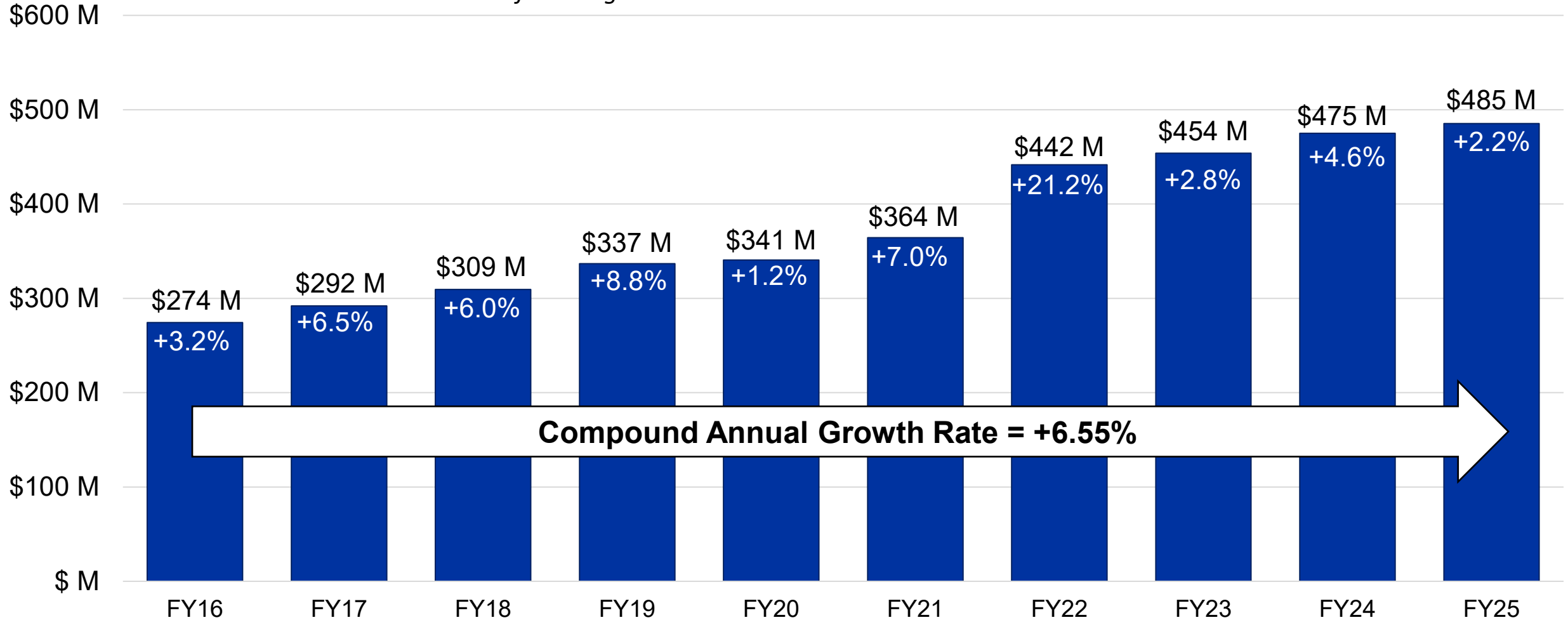
# UK R&D Expenditures

FY25

# Progressive Growth in UK R&D Expenditures

76.96% Growth  
FY16 – FY25

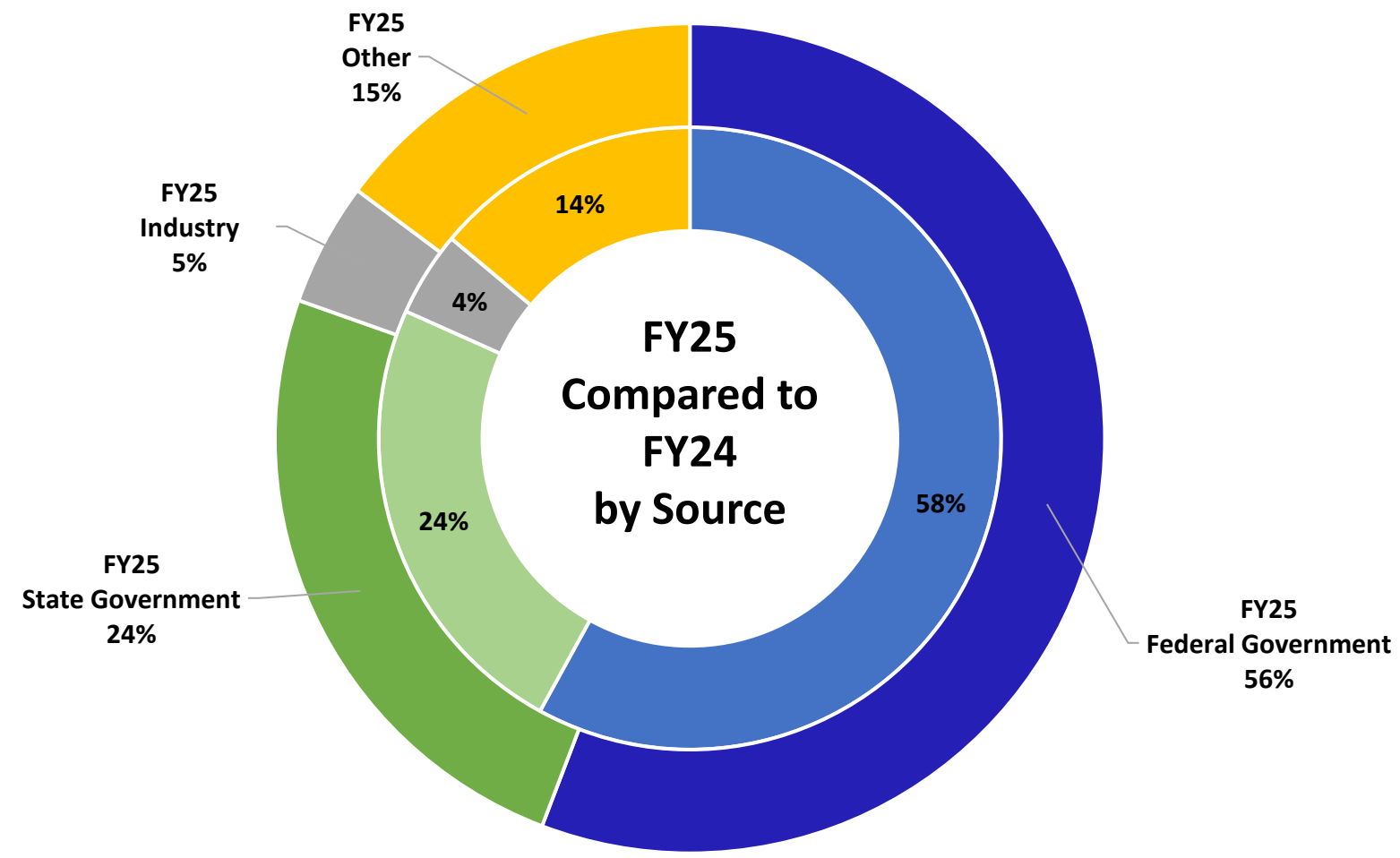
*Excludes CARES Act COVID-19 Relief Funding*



Source: University of Kentucky, Office of Sponsored Projects Administration Database

# UK R&D Expenditures by Source

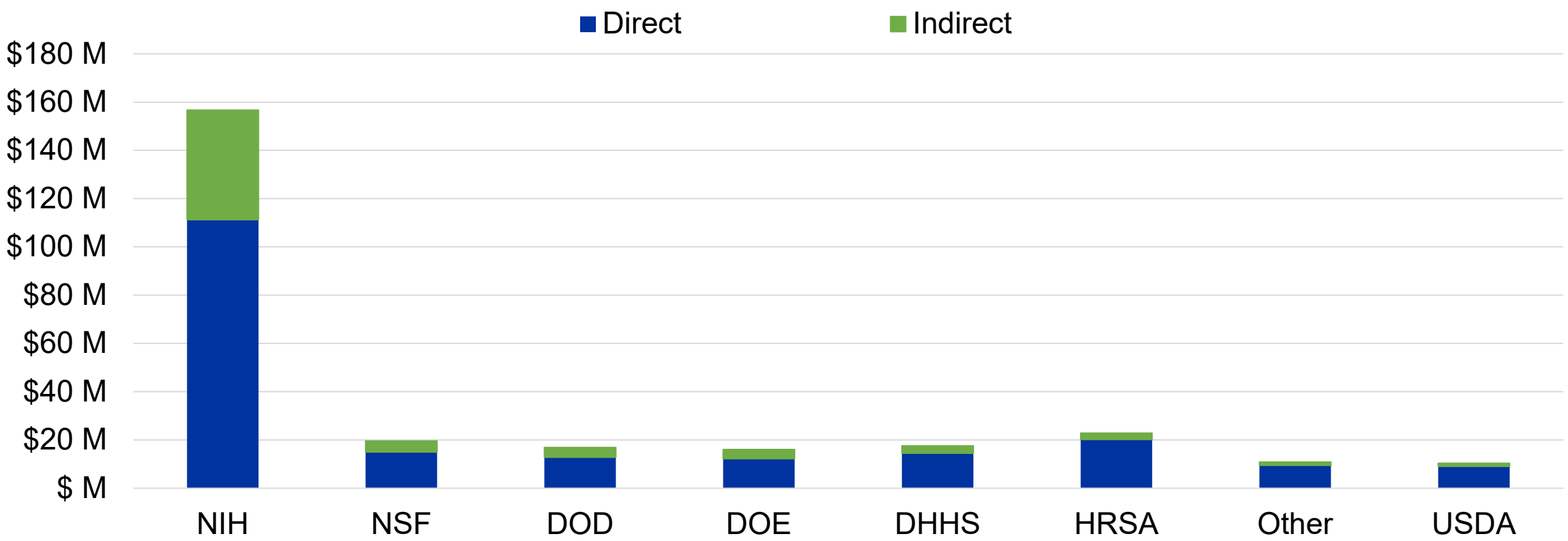
Federal R&D is the largest source



Source: University of Kentucky, Office of Sponsored Projects Administration Database

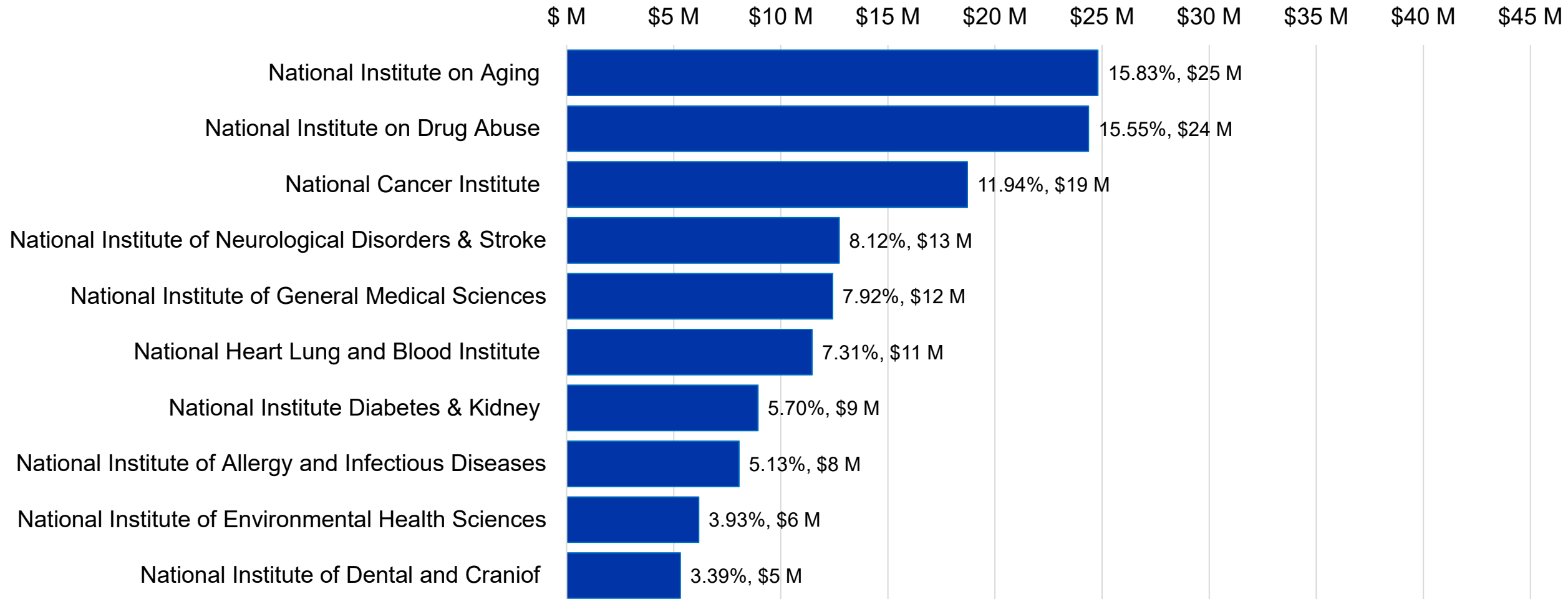
# National Institutes of Health (NIH) is the Largest Federal Source

## R&D expenditures by UK researchers FY25



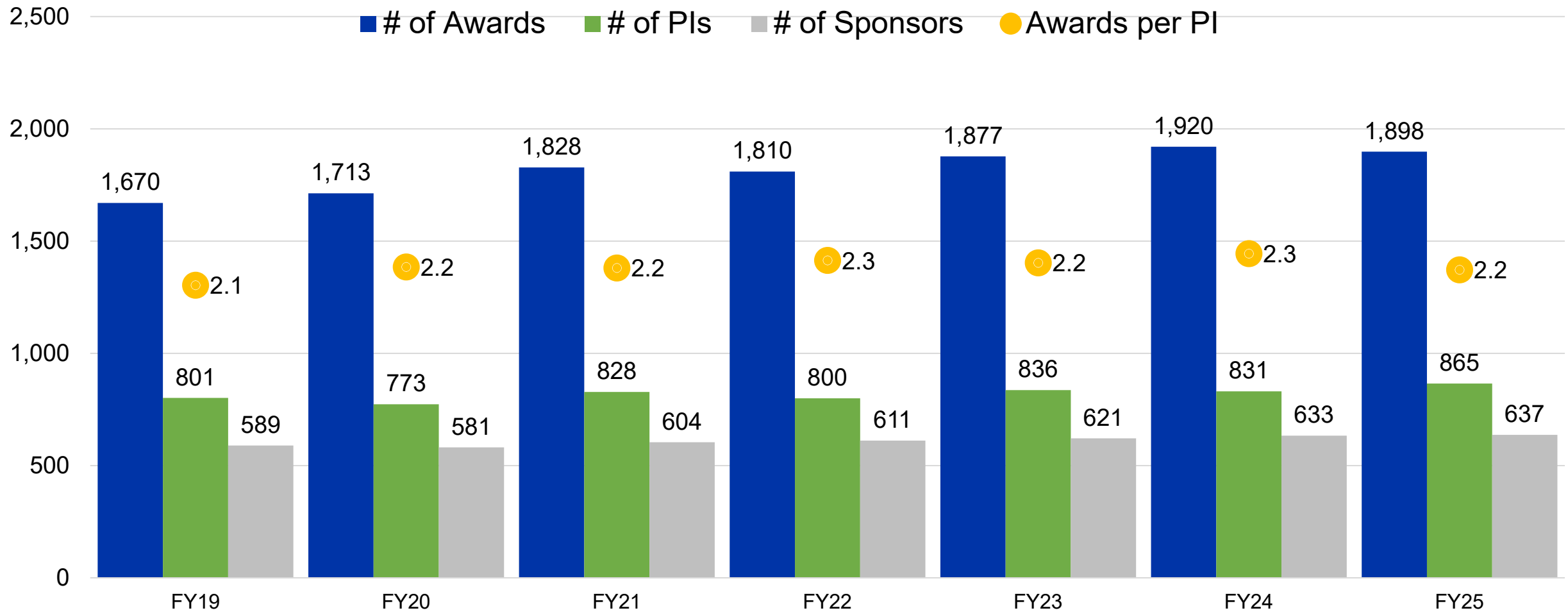
Source: University of Kentucky, Office of Sponsored Projects Administration Database

# UK R&D Expenditures by NIH Institute FY25



Source: University of Kentucky, Office of Sponsored Projects Administration Database

# Sustained Research Activity: Awards Per PI Hold Steady



Source: University of Kentucky, OSPA Database

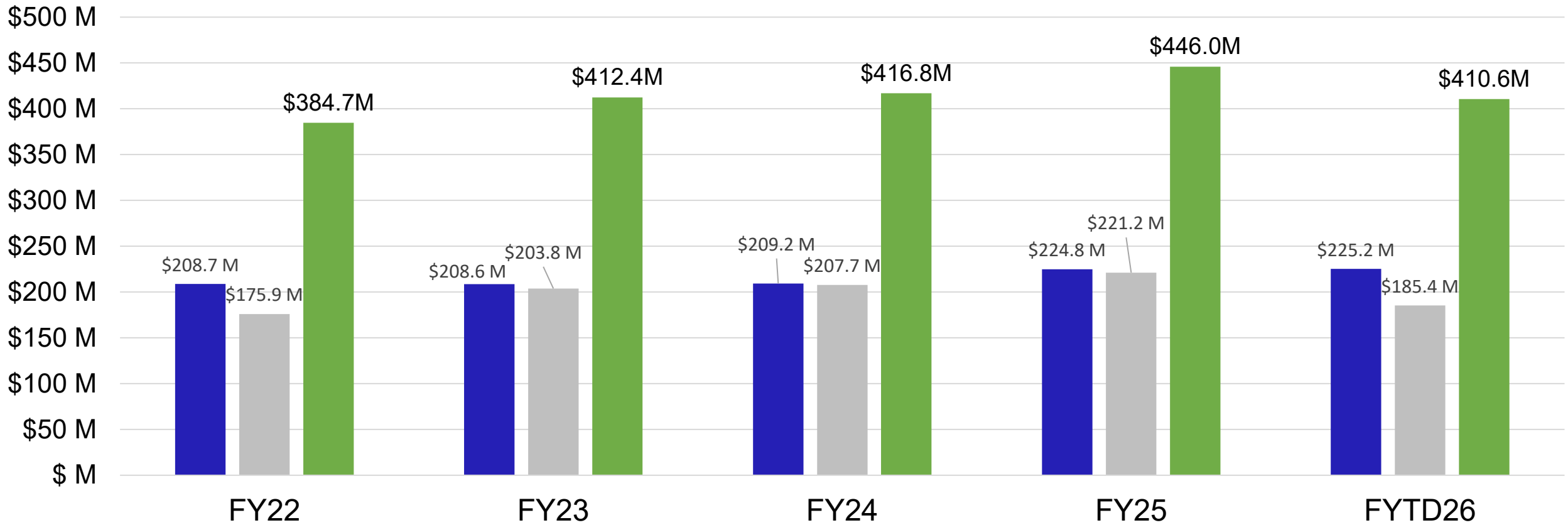
# **UK Grant and Contract Award Progress Year-to-Date**

FY26

# FY25 UK Grant and Contract Awards through April 30

July 1 – April 30 of Each Year

Federal Non-Federal Total



Source: University of Kentucky, Office of Sponsored Projects Administration Database

# **UK-PURPOSE, Research and the UKRF Budget**

Developing Tomorrow's Researchers:  
Undergraduate to Postdoctoral Support

# Developing Tomorrow's Researchers: Graduate Student Support

## Research Assistants

Most RAs are funded by external grants, which must cover the Universal Tuition Rate. OVPR and The Graduate School partner to fund out-of-state tuition scholarships.

## Teaching Assistants

UKRF has a long-standing commitment to TA support in the College of Arts and Sciences.



# Developing Tomorrow's Researchers: Postdoctoral Support

The **Office of Postdoctoral Research, Innovation, Scholarship & Mentorship (PRISM)** empowers the next generation of researchers, innovators, scholars, and mentors.

- UKRF provides stipend and research support funding for postdoctoral fellows
- Established the **Postdoc Success Talks (pst!)** series
  - BCTC partnership on community/technical college career pathways
  - 48 postdocs/senior graduate students attended
- **Society of Postdoctoral Scholars (SOPS) Symposium:**  
Sept. 17



# Putting Students First: Supporting Undergrad Researchers

The **Office of Undergraduate Research (OUR)** promotes research as a high-impact student experience to foster student success and enhance readiness to succeed in future careers. UKRF provides funding to ensure undergraduates have research opportunities across all disciplines.

**OUR celebrated its 25th anniversary!**



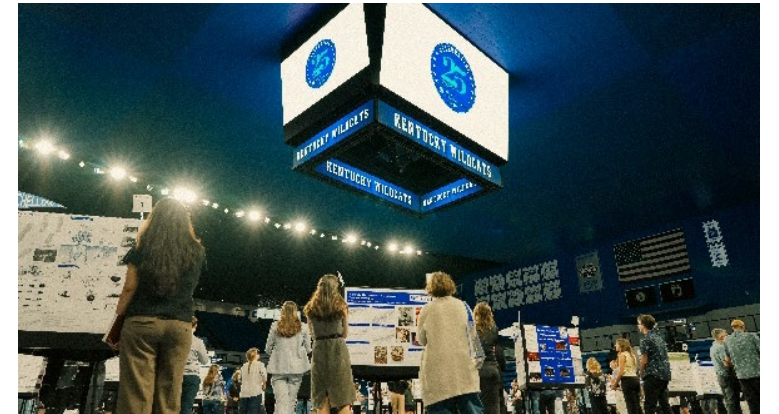
# Putting Students First: Supporting Undergrad Researchers



# Putting Students First: Supporting Undergrad Researchers

## Office of Undergraduate Research — Fall 2025:

- **92** research stipends and travel awards funded
- **53** events engaging **1,980** students
- **304+** Research Ambassador service hours
- **7** students represented UK at CUR advocacy and Posters at the Capitol in D.C.
- **548** undergraduate research presentations (500 at UK Showcase, 48 at NCUR)



# UK-PURPOSE, Research and the UKRF Budget

Taking Care of Our People:  
Research Support Units

# Taking Care of Our People: Research Support Units

These teams make research possible — providing infrastructure, ensuring compliance and supporting investigators at all stages of the project.

- Research Administrative & Fiscal Affairs
- Proposal Development Office
- Collaborative Grant Services
- Office of Sponsored Projects Administration
- Office of Research Integrity
- Office of the Attending Veterinarian
- SECURE
- Clinical Research Support Office
- Research Information Services
- Research Communications

# Taking Care of Our People: Research Support Units

## FY26 Key Accomplishments

### Research Administrative & Fiscal Affairs

- Launched new Enrichment Distribution system
- Added tracking/workflow for cost centers, budget transfers and journal vouchers

### Proposal Development Office

- 196 proposals submitted, \$312M requested
- 16 Complex Grant proposals; 4 newly awarded

### Collaborative Grant Services

- Built dashboards for proposal activity and workload visibility
- Launched web-based training to strengthen compliance

### Office of Sponsored Projects Administration

- 1,600+ proposals, 300 award negotiations, 600+ new accounts
- Automated federal account setup; launched contracts intake portal

### Office of Research Integrity

- Separated human subjects protection from research compliance
- Launched “AI in Human Subjects Research” video series

### SECURE (Export, Compliance & Research Engagement)

- Stood up new unit covering export controls, research security, COI and cybersecurity
- Led DOJ Data Security Compliance Program; delivered export control training

### Clinical Research Support Office

- Launched 21 CFR 11-compliant electronic Regulatory Binder
- 211 new protocols, 441 amendments; 439 OnCore/eREG trainings

### Office of the Attending Veterinarian

- Revised vet care oversight, IACUC policy and protocol form
- Formed AAALAC working group for Summer 2027 site visit

### Research Communications

- 52 newsletters, 42 videos, 109 UKNow articles, 816K website views
- 900+ social posts → 362K impressions, 9.8K engagements

### Research Information Services

- AI-enabled award setup automation; SPSVault collaborative proposals
- Delivered OSPA Contract Tracking, PDO Funding Alerts, Enrichment Data systems

# Taking Care of Our People: Research Support Units

## FY27 Plans and Priorities

### Research Administrative & Fiscal Affairs

- Extend tracking/workflow to HR processes and equipment maintenance
- Update SOPs for new S4 system; revamp website

### Proposal Development Office

- Pursue Complex Grants pipeline: USDA Ag Systems, NIGMS COBRE, NCI P01, NIEHS, NSF
- Target growth in Energy, AI and Quantum

### Collaborative Grant Services

- Automate routine tasks; build ticketing system for award tracking
- Expand joint training and launch internship program for entry-level support

### Office of Sponsored Projects Administration

- Streamline workflows to accelerate timelines and reduce bottlenecks
- Scale AI-supported account setup and contract intake tools

### Office of Research Integrity

- Prepare for single-IRB mandate; build AI chatbot for ORI/IRB questions
- Create AI templates/SOP; expand QA/QI for IRB Reliance protocols

### SECURE (Export, Compliance & Research Engagement)

- Strengthen guidance for foreign engagements; expand COI/commitment support
- Build NIST 800-171-compliant infrastructure for controlled unclassified information

### Clinical Research Support Office

- Pilot Epic clinical trial protocol builder; integrate eREG with E-IRB
- Centralize financial support; grow trials and reduce activation time

### Office of the Attending Veterinarian

- Improve IACUC operations: turnaround targets, reviewer metrics, member rotation
- Launch standalone IACUC website; continue AAALAC prep

### Research Communications

- Amplify visibility and reputation of UK Research
- Emphasize breadth, momentum and impact for Kentucky

### Research Information Services

- Expand AI automation; build ORI/E-IRB AI assistant; deploy Quali
- Complete SAP S4 integration testing; launch OAV health reporting system

# UK-PURPOSE and Research

Inspiring Ingenuity: Internal Investments That  
Accelerate Discovery

# Inspiring Ingenuity: Core Facilities

Continued funding for core facilities that provide access to instruments, technologies, services and expert consultation and training to researchers

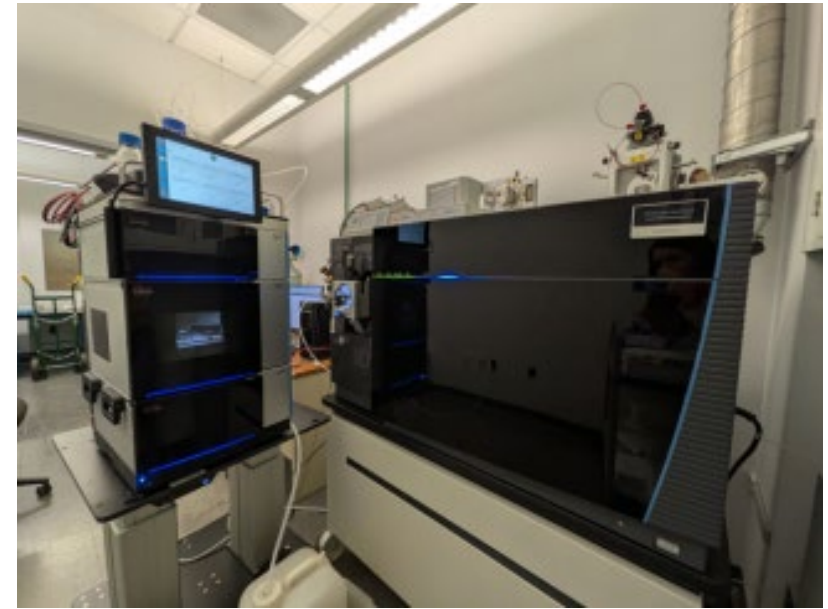
- Division of Laboratory Animal Resources
- Animal Behavior & Energy Balance Core
- Cellular Genomics & Imaging Core\*
- Electron Microscopy & Materials Characterization Core\*
- Flow Cytometry & Immune Monitoring Core
- Light Microscopy Core
- Magnetic Resonance Imaging & Spectroscopy Core
- Mass Spectrometry & Proteomics Core
- Pathology Research Core

\* Moved to OVPR in FY26

# Inspiring Ingenuity: Core Facilities

## FY26 New Equipment Acquisitions

- Thermo Fisher Orbitrap Ascend Tribrid Mass Spectrometer
- MILabs 3D/4D Optical Imaging & Micro-CT System
- Olympus FV5000 Laser Scanning Confocal Microscope
- Thermo Verios 5 Ultrahigh Resolution Scanning Electron Microscope
- Ultrasound Probe for Rat Studies
- Dry Heat Sterilizer (S15 NIH grant to DLAR)
- Enhanced high performance computing: 8X NVIDIA DGX H100/H200; new secure storage systems; replaced virtual servers



# Inspiring Ingenuity: Research Program Offerings

## CURATE: Celebrating University Research Across the Enterprise

Funding for nine-month colleges with less than \$10 million in R&D expenditures

Among UK's great strengths is the breadth and depth of our research, our ability to work across disciplines to ask and answer questions that impact all of us. That breadth strengthens how we find solutions to problems and how we train the next generation of researchers.



# Inspiring Ingenuity: Research Program Offerings

## UKinSPIRE: Seeding Partnerships for International Research Engagement

Funding to stimulate high-impact research projects with UK faculty and international collaborators

In FY25, 39 innovative proposals from principal investigators in 12 academic colleges were funded.

The proposals involved research collaborations in 27 countries on six continents.

- “The Role of Pain, Parafunctional Habits, and Stress on Masticatory Muscle Activity,” Ian Boggero (College of Dentistry)
- “Exploring the Past to Power the Future: A New UK-Hungarian Partnership for Critical Mineral Research in Alkaline-Carbonatite Systems,” Georgina Lukoczki (Kentucky Geological Survey)
- “Arts and Cultural Heritage in Protected Areas: Management Strategies, Sustainable Tourism, and Crisis Impacts,” Leah Hamilton (College of Fine Arts)

# Inspiring Ingenuity: Research Program Offerings

## Conference Support Grants

Funding for professional organizational conferences and workshops that highlight UK's experts and are held locally

## University Research Professors

Established by the Board of Trustees in 1976, the professorships program recognizes excellence across the full spectrum of research at UK.



# Inspiring Ingenuity: UK Innovate

## FY26 Highlights

- Record patents issued; NAI Top 100
- Built Healthcare innovation team
- 5 startups launched
- LifeSciKY partnership
- Co-led and launched CATS AI

## FY27 Priorities

- Increase startups
- Launch KY Bio Alliance
- Win NSF grants (ART, AI-Ready, Test-Bed)
- Grow industry partnerships

117

TOTAL  
INNOVATIONS  
DISCLOSED IN FY  
2025

25

SOCIAL  
INNOVATIONS  
DISCLOSED IN FY  
2025

131

INTELLECTUAL  
PROPERTY  
APPLICATIONS  
FILED IN FY 2025

57

PATENTS ISSUED IN  
FY 2025

73

LICENSES &  
OPTIONS EXECUTED  
IN FY 2025

653

AGREEMENTS  
EXECUTED IN FY  
2025

1,052

WORLDWIDE  
PATENT ASSETS IN  
FY 2025

1

NEW UK STARTUP  
FORMED IN FY 2025

1,275

TOTAL CORPORATE  
ENGAGEMENTS IN FY 2025

28

TOTAL PRIMARY SOCIAL  
INNOVATION DISCLOSURES  
SUBMITTED IN FY 2025

\$22.6M

IN INCOME DISTRIBUTED TO  
COLLEGES & DEPARTMENTS  
SINCE 2010

# UKRF Budget

Proposed FY27 Budget

# UKRF Budget

- FY26 budgeted \$48.9M of anticipated F&A income, representing a 33% decrease from the previous year in anticipation of significant changes to reimbursements through F&A
- FY27 proposes a budget of \$74.2M in F&A income, a conservative estimate of approximately 80% of the actual income earned in FY26

# Budget Summary

Tab 5b, page 1

- Total Revenue: \$188,849,243
  - Representing an increase of \$23,557,163
- Total Transfers and Expenditures: \$188,849,243
  - Transfers of \$42,757,657 to the institution
  - Expenditures of \$146,091,586

# I. Transfers to General Fund (major changes)

## Tab 5b, page 2

### A. Transfers to University Wide

- A.2. Service assessment, +\$150,712 represents a 5% increase for centralized services such as payroll and human resources
- A.7. Research Financial Services, +\$105,767 annual salary increases and half of a position
- A.8. VP University Relations, Research Communications, +\$75,287 annual salary increases and additional position
- A.10. Research Data Analytics, +\$125,457 annual salary increases and additional position
- A.11. Technology Enhancements, +\$1,950,000 increase in support for technology upgrades

### B. Research Administration Personnel

- B.1. Office of the VPR, +\$1,619 annual salary increases
- B.2. Res Admin & Fiscal Affairs, -\$555,431 reduction due to restructure and position realignment
- B.3. OSPA, +\$901,944 addition of 6 positions and anticipated promotions
- B.4. CRSO, +\$641,546 annual salary increases and addition of 4 positions
- B.5. SECURE, +\$751,029 realignment of 3 positions and addition of 2 positions
- B.6. PDO, +\$102,599 annual salary increases and addition of 1 position
- B.7. ORI, +\$100,599 annual salary increases and promotions as a result of reorganization
- B.8. RIS, +\$39,677 annual salary increases
- B.9. OAV, +\$146,839 annual salary increases, 1 anticipated promotion, and 1 shared position with DLAR
- B.10. CGS, +\$403,440 annual salary increases and anticipated promotions
- B.10. OTC, +\$163,072 annual salary increases and realignment of 2 positions

### D. Debt Service +\$88,701 7% of F&A income estimate

# II. Expenditures, A. Operating expenses

## Tab 5b, page 2

### A. Operating Expenses, Research Administration

A.2. RIS Operating & Software: +\$35,507 increase in research computing software costs

A.3 OSPA: -\$50,000 decrease in operating costs and travel

A.5. OTC: +\$106,241 increase in software cost for patent management and realignment of funding for technology commercialization

A.7. Discretionary Accounts: +\$1,500 increase in discretionary for Research Administration (based on number of FTE)

A.8. Overruns/Disallowed: -\$2,000 cost is passed on to departments

A.9. OAV: -\$8,100 decrease in operating costs

A.13. Proposal Development Office: -\$10,700 decrease in operating costs

A.14. Office of Research Integrity: -\$17,000 decrease in operating costs

A.15. Research Financial Services: +\$38,825 increase in audit fees & software licenses

A.17. CGS Operating: -\$25,000 decrease in operating costs and travel

A.18. SECURE: +\$36,500 addition of costs for operating software and professional development

# II. Expenditures, B. Other activity

## Tab 5b, page 3

### B. Other Activity

B.1. Contingency reserve: +\$2,535,715 10% of F&A estimate required by bylaws

B.2. Private gifts/endowments: +\$16,800 colleges are anticipating an increase in gift/endowment expenditures

B.3. Intellectual Property License Expenses: -\$900,000 estimates of patent/license costs

B.4. Intellectual Property Royalty Sharing: +\$1,338,070 expense budget for fund balance

B.5. UK Innovate Royalty Sharing: -\$1,055,932 fund balance carryforward lower than last year

B.6.a Clinical Research Support Office fees: +\$11,500 increase in fees

B.6.c. Estate Whiskey Alliance: -\$45,000 decrease in new memberships

# II. Expenditures, C. Research Programs

## Tab 5b, page 3

### C. Research Programs

C.1.a. Formulaic start-up: +\$5,071,430 - 20% of the F&A income estimate

C.1.b. Non-formulaic start-up: -\$1,513,00 several large startup commitments were completed

C.2.a-c. Research Activity/Enrichment return programs to colleges/centers: +\$7,099,984 –  
Enrichment, Academic Home and RAA return will be at full amount of 10 or 16%

C.3.a. Faculty Research Support: -\$101,000 completion of Igniting Research Collaboration program,  
increase in incentive funds for IRB, IACUC and IBC members

C.4. Grant Related Support: +\$1,440,216 anticipated funding for letters of support if grants are awarded

C.5. Shared Use Facilities: +\$980,050 investment in core facilities

C.6. University Wide Initiatives: +\$6,795,200 funding for FY27 research initiatives

C.8. Fund Balance Carryforward Estimate: -\$3,775,000 decrease in funds being carried forward from  
Startup, Enrichment, RAA and VPR internal programs

# FY27 Research Initiatives

## Advancing Kentucky Together Through Five Bold Goals

**Strategic Goal:** Reach \$750 million in research funding by 2031 through coordinated, cross-college collaboration mobilizing the full campus research enterprise

### Five Bold Goals

- Address challenges facing the Commonwealth
- Build on existing UK strengths and infrastructure
- Engage faculty across multiple colleges based on mission and purpose
- Maintain steady growth in NIH funding
- Position UK for significant federal funding growth in underrepresented agencies

### High-Priority Areas of Emphasis

- **Health & Community Well-Being**
- **Environment, Energy & Sustainability**
- **Heritage, Arts & Humanities**
- **National Security & Strategic Technologies**
- **Artificial Intelligence**

# II. Expenditures, D. Student/Training Support

## Tab 5b, page 3

### D. Student/Training Support

D.4. Graduate School Program Support: +\$359,500 increase in out-of-state tuition differential

# Challenges and Headwinds: F&A and the FAIR Model

## The Threat

- Federal agencies attempted a 15% F&A cap in 2025; FY26 appropriations prohibit implementation
- OMB Uniform Guidance update expected later in 2026 could revisit rate limitations

## The FAIR Model Response

- The Joint Associations Group (JAG) proposed the Financial Accountability in Research (FAIR) model
- FY26 appropriations language references FAIR
- JAG pursuing FY27 codification

## What It Means for UK

- FAIR adoption will require new cost-tracking systems and reclassification of current F&A categories with potential reduction to UKRF revenue and infrastructure investment capacity

Expanded Option		Base Option <small>Available for all institutions and especially attractive for those with insufficient administrative resources, or lacking the type of research appropriate for, the Expanded Option</small>	
<b>Research Performance Costs (RPC)</b>		<b>Research Performance Costs (RPC)</b>	
Senior Key Personnel (e.g., PIs)	\$\$	Senior Key Personnel (e.g., PIs)	\$\$
Other Personnel (e.g., grad students)	\$\$	Other Personnel (e.g., grad students)	\$\$
Supplies	\$\$	Supplies	\$\$
Publication costs	\$\$	Publication costs	\$\$
Etc...	\$\$	Etc...	\$\$
<b>Essential Research Performance Support (ERPS)</b>		<b>Essential Research Performance Support (ERPS)</b>	
<i>Regulatory Compliance (RC)</i>	\$\$	<i>Regulatory Costs (RC)</i>	\$\$
<i>Award Monitoring, Oversight, and Reporting (AMOR)</i>	\$\$	<i>Award Monitoring, Oversight, and Reporting (AMOR)</i>	\$\$
<i>Essential Research Performance Facilities (ERPF) (% of budget)</i>	%		
<i>Research Information Services (RIS)</i>	\$\$		
<b>General Research Operations (GRO) (% of budget)</b>	<b>15%</b>	<b>General Research Operations (GRO) (% of budget)</b>	<b>15%</b>

} 10% of total Budget

# University of Kentucky Research Foundation Budget

- Record federal award levels, landmark faculty honors and five new startups show that UK's research enterprise is accelerating.
- The FY27 UKRF budget doubles down on that momentum investing in core facilities, research talent and the infrastructure that powers discovery across every college, center and institute.
- None of this is possible without our faculty, staff, students and trainees whose dedication and ingenuity drive UK's research mission every day.
- With Inspiring Ingenuity as our guide and UK-PURPOSE as our framework, we are positioned to reach new milestones in research impact for the Commonwealth and beyond.