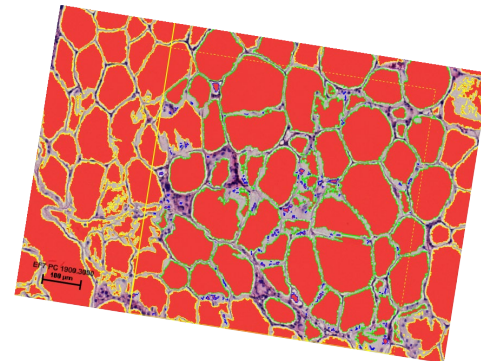
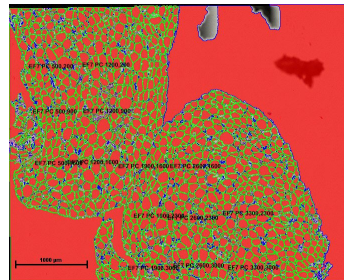
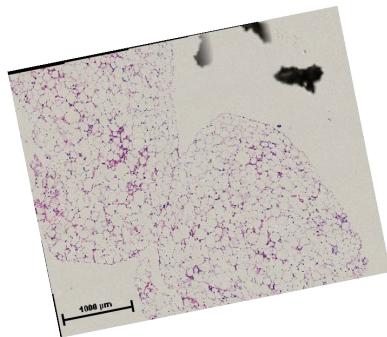


# Pathology Core Facilities Overview

## 5<sup>th</sup> floor CTW



# Purpose

- To inform you of equipment available for common use.
- To review protocols for use.
- To solicit your help in maintaining equipment.
- To inform you that use of Pathology Core equipment and/or services requires that you cite specific grants in publishing data that was obtained.

# How can you help?

- Reserve through PPMS before using microscopes (important for maintenance contracts and for general monitoring of equipment).
- Receive training on each microscope prior to use to assure that equipment is kept in good operating condition.
- Keep things clean
- Be regular monitors yourselves, if you don't like something you see, tell the person using the equipment
- Cite appropriate grants for when publishing your exciting findings

# 5<sup>th</sup> floor microscopes

General Policy: Each microscope has filter controls etc. in slightly different places.

The newer Nikons have a special flip-down or slide-in lens for the 4x objective.

➤ If you are using a particular microscope for the first time, ask Marsha (ml.ensor@uky.edu) or an experienced user from your lab for an orientation.



# CTW Room 551: Nikon Eclipse 80i Upright with fluorescence

12 MP color camera.

Objectives:

- 4X Plan Fluor
- 10X Plan Fluor
- 20X Plan Apo
- 40X Plan Apo
- 60X, 100X\*

\*by prior arrangement with Marsha



Motorized stage with image stitching software

NIS Elements imaging and analysis software

# CTW 551: Nikon Eclipse 80*i*

- This microscope is primarily for high resolution imaging.
- Please sign up to use the microscope.
- Please move the objective to 4X to insert slides and remove slides from the stage.
- Please do not remove objectives from the microscope.
- The 40X objective is NOT an oil objective. The 60 X and 100X are. If you use oil on your slide do NOT use the 20 or 40X objectives as the oil will ruin the objectives.
- If you aren't sure ASK...



# Additional objectives

- 60X Plan Apo
  - 100X Plan Fluor
- (both oil objectives)

Marsha has them.



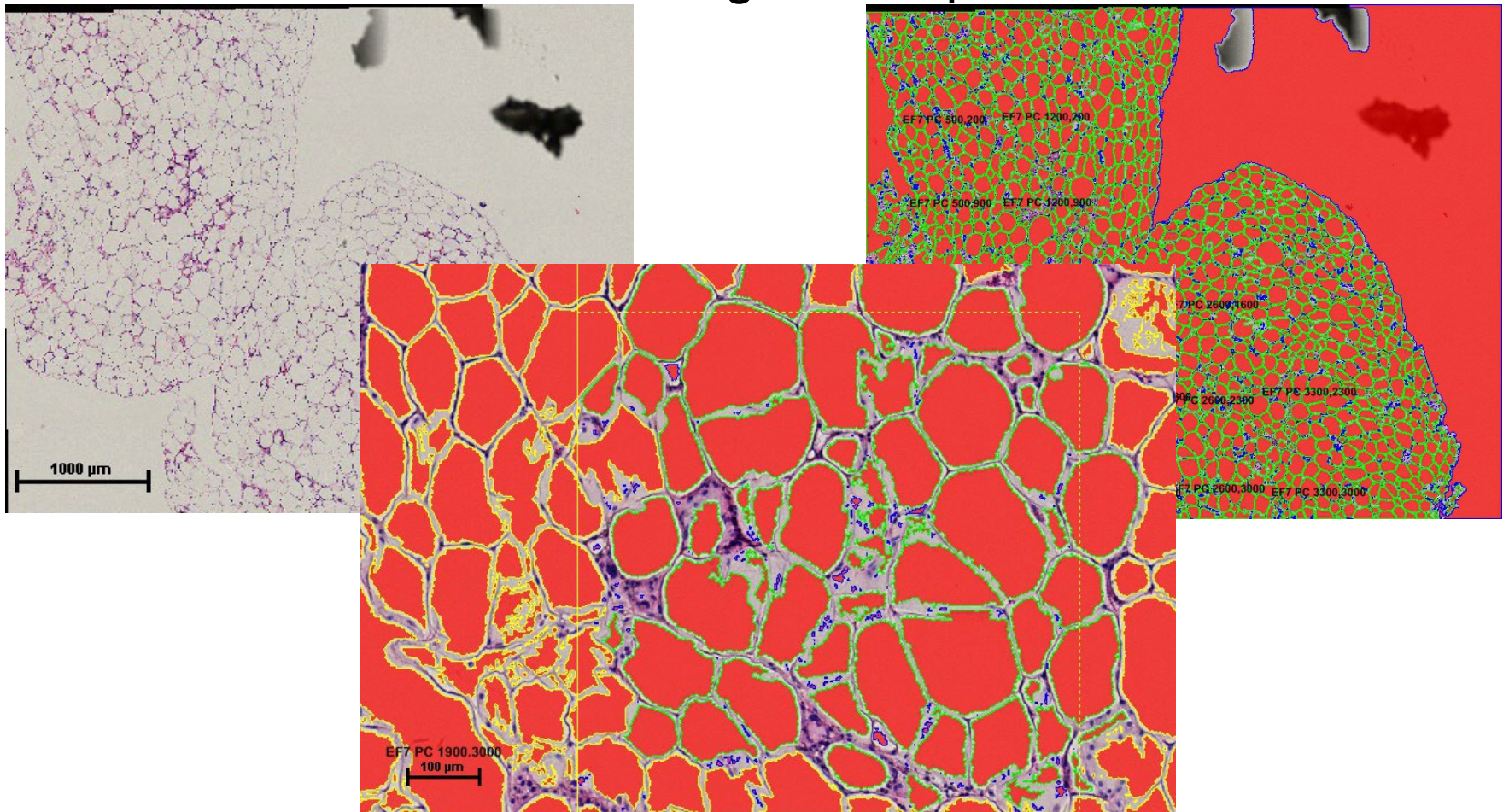
For use on *upright* (Eclipse 80i) microscope

Can *NOT* be used on the inverted microscope

Make arrangements with Marsha at least 24 hrs in advance

# Motorized stage in 551

- Joystick control
- Rapid navigation options in software
- Permits automated stitching of multiple fields





# CTW Room 599B: Inverted with fluorescence

Monochrome camera.

Objectives:

- 2X Plan
- 4X Plan Fluor
- 10X Plan Apo
- 20X Plan Fluor
- 20X Plan Apo
- 40X Plan Fluor



# CTW Room 564: Nikon Eclipse 80i



- Color camera
- Objectives:
  - 4X Plan Fluor
  - 10X plan Fluor
  - 20X Plan Fluor
  - 40X Plan Fluor

NIS Elements imaging and analysis software

# 564 Nikon Eclipse 80i

- This microscope is primarily for imaging tissue sections and quantification.
- Please sign up to use the scope.
- Nikon NIS Elements Software for quantification (athero, renal....).
- Please use this scope for quantification rather than the scope in 551.
- Please move the objective to 4X to insert slides and remove slides from the stage.
- Again if you have a question ASK.....

# CTW Room 564: Nikon Eclipse 55i Upright

Located between embedding center and microtome.

Color camera.

Objectives:

- 4X Plan
- 10X Plan
- 20X Plan
- 40X Plan
- 100X Plan (Oil)



NIS Elements imaging and analysis software



# CTW Room 564: Nikon Inverted microscope

Located between embedding center and microtome.

Color camera.

Objectives:

- 2X Plan
- 4X Plan Fluor Phase
- 10X Plan Fluor Phase
- 20X Plan Fluor Phase
- 40X Plan Fluor Phase

NIS Elements imaging and analysis software

